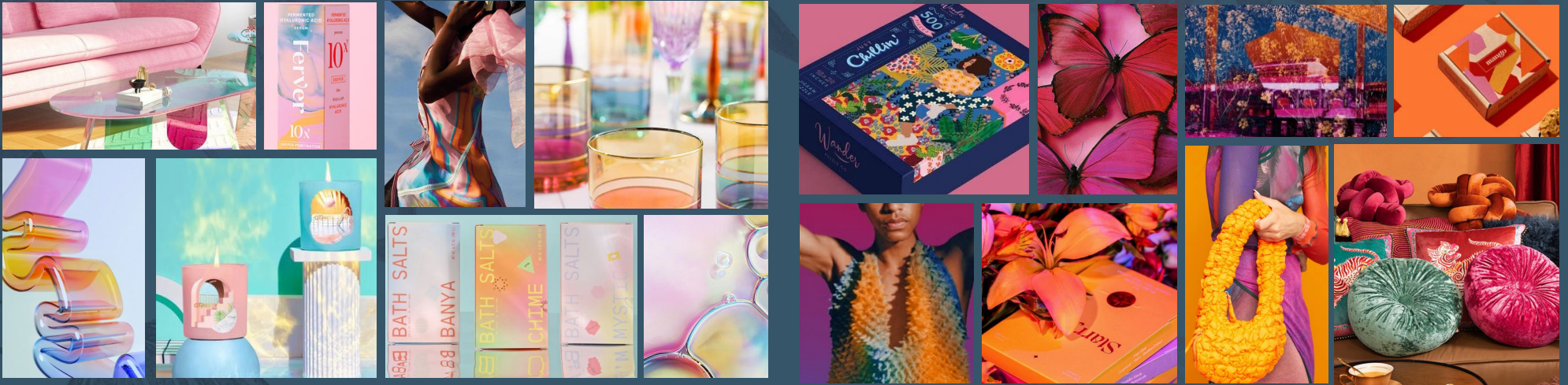


# A&H MFG WORLDWIDE



SPRING SUMMER 2024

Dreamscape

Eclectic Escape

What's Trending



**Packaging** is not just a cover for your product,  
*it tells your brand story.*

— A&H Worldwide

# Overview

## TREND 2024

Uplifting  
Energizing  
Adventurous



Your brand's uniqueness is reflected in your packaging, and our **Spring/Summer 2024 Trend** takes this concept to the next level. Not only will you see a variety of fresh colors, but also unconventional packaging concepts that break the mold. These innovative ideas aim to make your product stand out on the shelf and capture the attention of consumers. The combinations of vibrant colors, contrasting finishes, and striking textures are designed to set your packaging apart from the competition and leave a lasting impression on new and returning customers alike.

# Dreamscape

TREND 2024

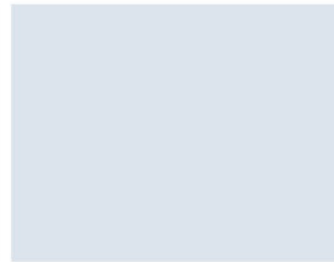
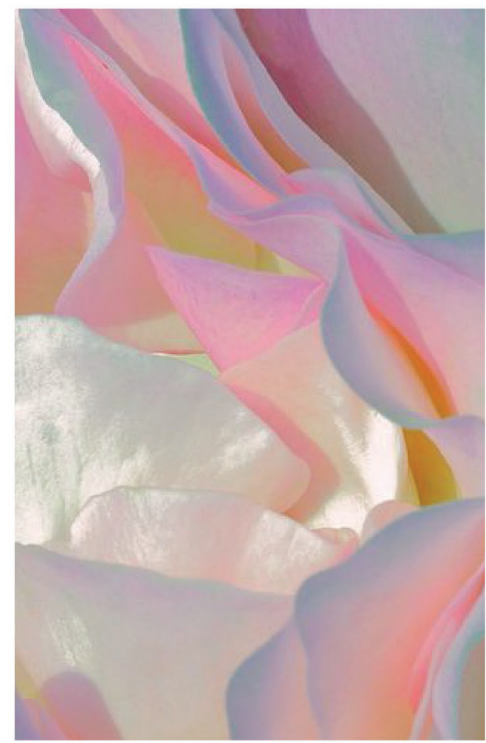


Airy

Dreamlike

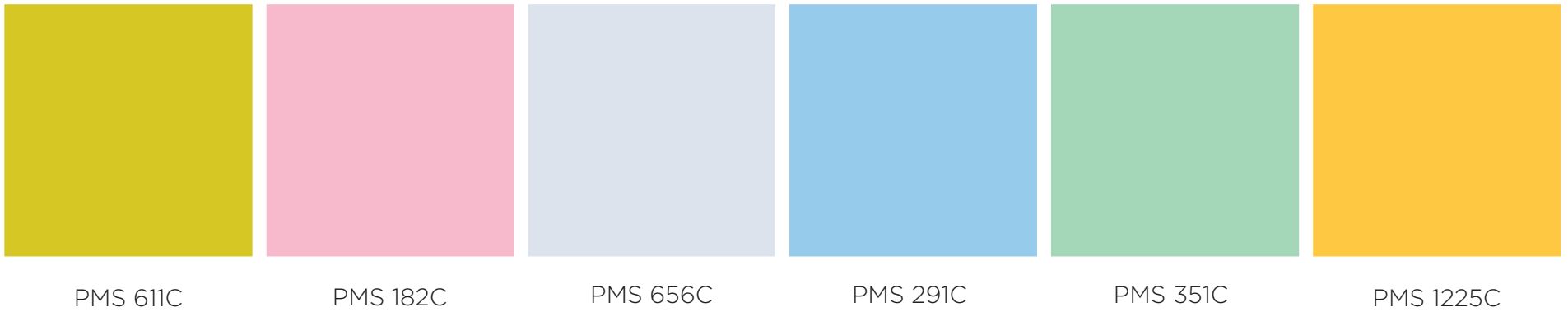
Refreshing

Indulge in a serene **Dreamscape** and leave behind the hustle and bustle of the hectic world. The color palette of this trend features zesty pastel shades with a refreshing, uplifting quality, evoking a sense of escapist tranquility. The interplay of super matte and glossy finishes creates a soothing contrast that inspires a feeling of relief and reassurance. Together, these elements create an alluring atmosphere that invites one to unwind and rejuvenate.



# Dreamscape

## CORE COLORS



This palette features a unique combination of “pastel neon” colors blended together to create an ethereal and dreamlike atmosphere. While the specific colors are important, the real key to this palette is the way they are blended, and the textures used. Glossy finishes with a water-like feel add to the overall effect, creating a seamless and cohesive look that transports us to another world. The result is a truly unique and captivating palette that can add a touch of magic to any project.



TRANSPARENT GRADIENT PLASTIC BOXES & GIFT BAG

PAPER HINGE BOX



HANGING BOX



SLEEVE BOXES

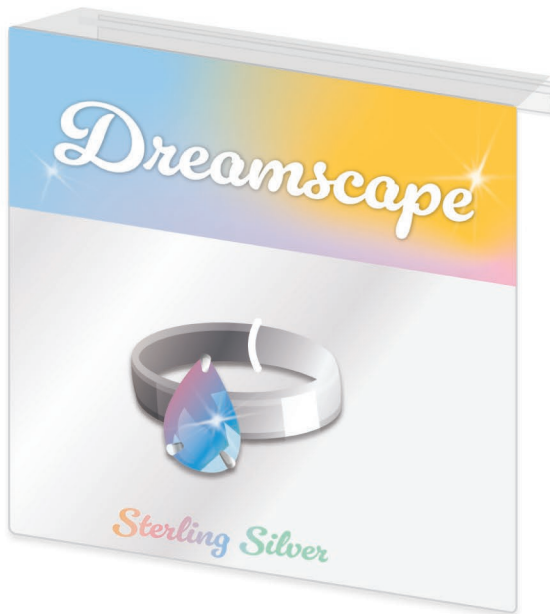




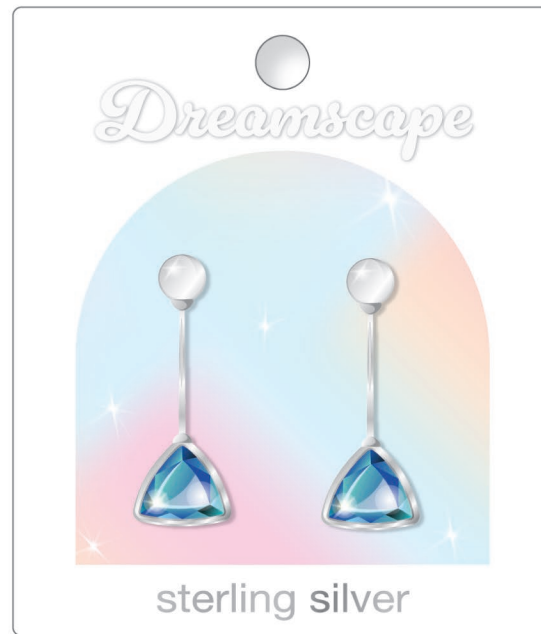
FOLDOVER



LAYERED HANG TAG

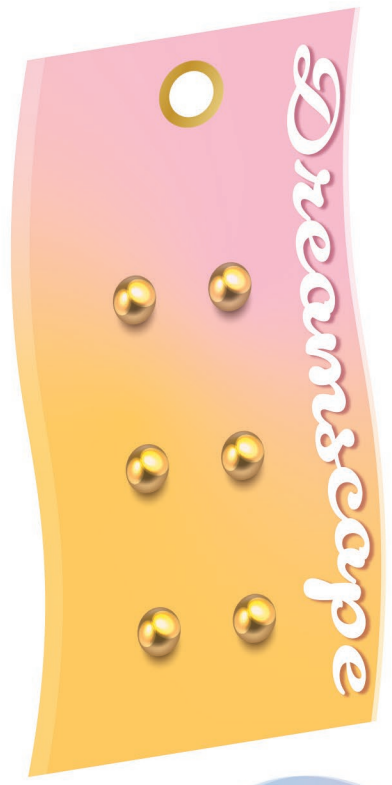


HANGER CARD



FLAT CARDING

SHOE HANGER



VINYL  
EAR CARDS



BELT HANGER





FRONT

BACK



ONE CARD, FOUR WAYS TO DISPLAY!

POUCH & CARD SET



POUCH & PUFF PAD SET



# Eclectic Escape

TREND 2024

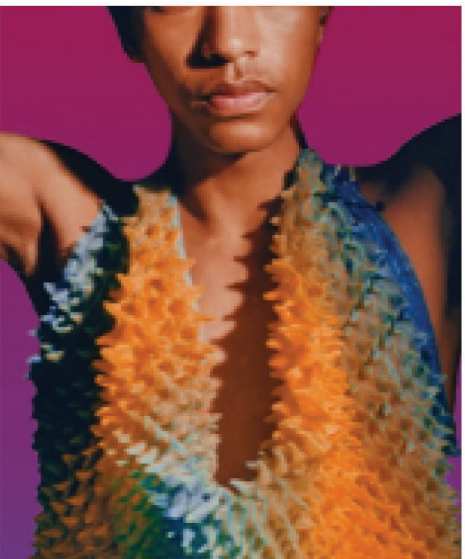
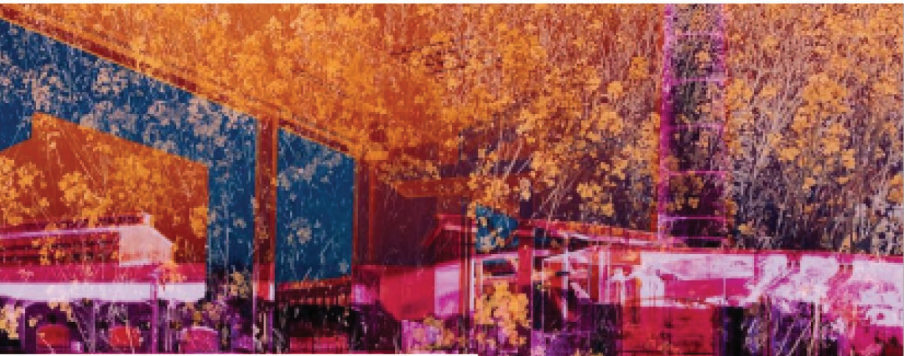
Artful

Embellished

Unconventional

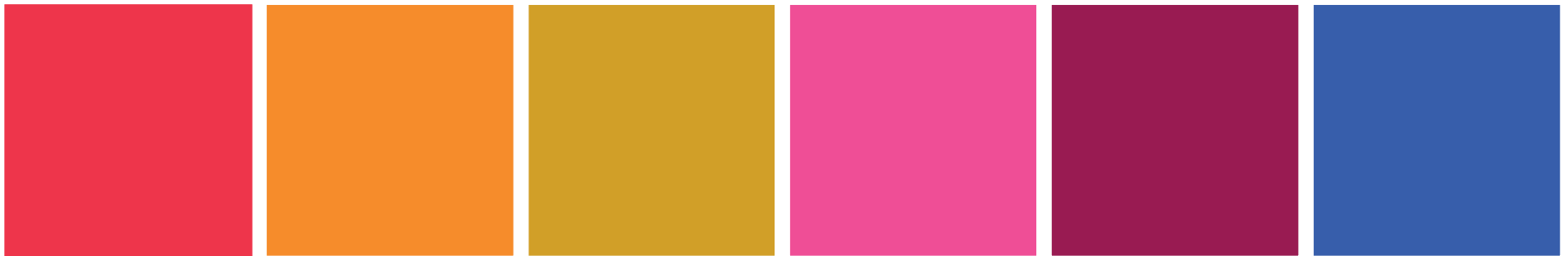


Celebrate uniqueness and make a statement with this uplifting palette that aims to inspire the eccentric and the inquisitive. With its vivid colors and regal textures, this trend design exudes a dramatic vibrancy that commands attention. Symmetry takes a backseat to novelty, as unconventional proportions and daring textures are embraced to promote a love for all things bold and unconventional.



# Eclectic Escape

## CORE COLORS



PMS 1787 C

PMS 715C

PMS 7555C

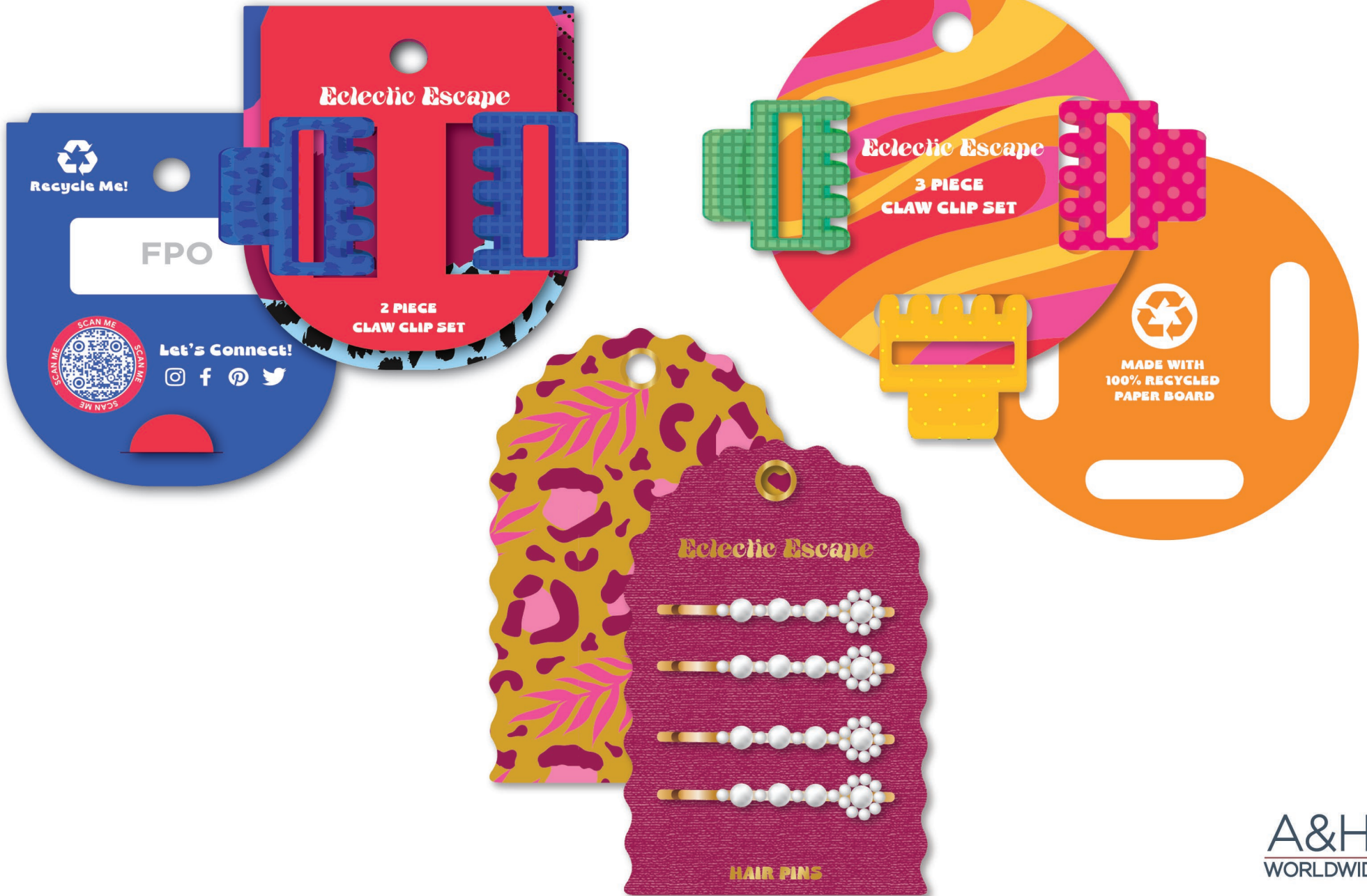
PMS 212C

PMS 676C

PMS 7455C

**Eclectic Escape** features vibrant pinks that are elevated to new heights by being juxtaposed against a rich beetroot red and softened with a deep blue. The bold expression of color in this palette represents true individuality and creativity. The vibrant pinks take center stage, allowing them to shine in all their glory. This palette is a celebration of bold and daring color choices that can make any project stand out and leave a lasting impression.

## HAIR ACCESSORY CARDING





VELCRO TENT CARDS



EAR CARDING



BOARD FLIP FLOP FOLDOVER



ENVELOPE & CARD

LEATHERETTE BELT HANGER



VELVET EARRING HANGER

SLIDING BOX



PAPER HINGE BOX



FOLDING BOX





HANG & STRING TAGS

# Common Themes

TREND 2024

Escapism

Uniqueness

Individuality



These two trends share a common theme of “escapism” that encourages individuals to follow their hearts and embrace their uniqueness. They offer an opportunity to escape into a peaceful, dream-like state while also being bold and adventurous. By breaking away from convention and embracing individuality, these trends provide a positive escape from reality. Additionally, they promote uplifting others and sharing the qualities that make each person unique.

We're excited to show you our new  
2024 Spring/Summer  
Trend Program!

We're Here to Help!

For more information on how you can incorporate these trends into your product packaging, please give us a call at **401-943-5040**

or email **info@aandhworldwide.com**.

Be sure to visit us online at **www.aandhworldwide.com**